



# ProForce

## Product Portfolio

*Plant protection solutions for non-crop situations*





## About Us

Indigo Specialty Products is a privately-owned business, formed and operated by a small team of industry professionals with extensive experience in manufacture, distribution, development and product registration. We are a business focused on production & supply of plant protection, pest control, plant nutrition, soil, water management & biological products. Specialising in Australasian non-crop and niche horticultural markets, including Turf & Amenity, Nursery Production, Industrial Vegetation Management, Forestry, Pest Control and Consumer Home Garden & Pest Management.



### Formulated in Australia

Our goal is to manufacture the Indigo product ranges in Australia as much as possible, where we can oversee product quality processes, whilst allowing us the flexibility to modify products to overcome ever changing challenges. Our ProForce and HydroForce range of products are formulated in Australia using imported materials. Our Xcel Fertiliser and BioForce Biological range are manufactured in Australia to the highest possible standards.



### Focused on specialty markets

We strive to be relevant in our core markets, by adding value via overcoming issues and obstacles that are present in the markets we operate within. We do this by focusing on control of key pests or diseases or by solving key management issues that our valued end user customers have. We also strive to be active in the core markets in which we operate by working closely with our allied distributor network, offering support, service and advice where required.



### Developed & researched for local conditions

We are heavily focused on local research and development to ensure our products perform at their peak in the Australian markets. We actively invest in field trial research programs and modify our formulations to match the local conditions of the key markets in which we operate to maximise performance.



### Diagnostic services

We offer a complete diagnostic services package, known as TechForce, designed to evaluate and identify key agronomic problems, so we can be better informed in recommending products for the specific situation. We also believe that by offering these services, our customers and users of our products can evaluate performance of the portfolio in a quantifiable and scientific approach. We use some of Australia's leading laboratories in delivering results for our services including: Westgate Labs, Department of Primary Industries and Tweed Laboratories.

## WEED IDENTIFICATION GUIDE

Bindii



Burr Medic



Capeweed



Creeping Oxalis



Crowsfoot Grass



Cudweed



Fleabane



Gomphrena Weed



Mallow



Mexican Clover



Mullumbimby Couch



Nutgrass



Pigweed



Plantain



Red Flowered Mallow



Summergrass



Toad Rush



White Clover



Wintergrass



Wireweed



# REGISTERED FOR SELECTIVE WEED CONTROL IN TURF SITUATIONS

Weeds Controlled / Herbicides	Battalia 435	BroadForce MA	Checkpoint 500SC	Contra M	Destro 375	Duke 100WG	Echelon & Echelon Duo	Geronimo 800SL	Onset 10GR	ProForce Weedblast MA	ProSedge 750DF / HaloForce	Recondo 100WG	Warhead Trio
<b>REGISTERED FOR SELECTIVE WEED CONTROL IN TURF SITUATIONS</b>													
African Lovegrass									●^				
Bahia Grass						●#			●^			●#	
Barnyard Grass									●^				
Bindii		●		●		●						●	●
Bindy-eye		●		●						●			
Capeweed		●		●						●			●
Catsear		●		●		●				●		●	●
Caustic Weed						●							
Chickweeds				●								●	
Clovers		●		●		●				●		●	●
Cotula				●		●						●	
Crabgrass ( <i>Digitaria</i> spp.)	●^							●	●^				
Creeping Buttercup		●								●			
Creeping Oxalis		●		●		●	●^			●		●	●
Crowsfoot ( <i>Eleusine</i> spp.)	●^				●		●^		●^				
Cudweeds		●		●		●				●			●
Dandelion		●		●						●			
Dock				●								●	
False Onion Weed						●							
Flatweeds (general)				●									
Fleabanes		●		●						●			
Fumitory				●									
Jo-Jo (One Hunga)				●						●			●
Kentucky Bluegrass									●^				
Kikuyu												●#	
Lambs Tongue (Plantain)		●		●						●			●
Medics						●						●	
Mullumbimby Couch											●	●	
Nutgrass											●	●	
Onion Grass / Guildford Grass						●							
Parramatta Grass									●^				
Paspalum								●	●^				
Pearlwort				●									
Pennywort				●									
Peppergrass				●									
Radish				●									
Rats Tail Fescue									●^				
Ryegrass						●						●	
Summergrass ( <i>Digitaria</i> spp.)	●^						●^	●	●^				
Scarlet Pimpernel				●									
Thistles				●		●				●		●	
Toad Rush				●									
Wild Turnip				●									
Winter Grass ( <i>Poa annua</i> )	●^		●			●#	●^		●^			●	
Wireweed (Hogweed)				●									

# Registered for Suppression only

^ Pre-emergent weed control only

## SELECTIVE HERBICIDES

Product	Active Ingredients	Formulation	Pack Size	Mode of Action	Pre or Post Emergence	Contact or Systemic	Rate
ProForce Battalia 435 Herbicide	435g/L Pendimethalin	Emulsifiable Concentrate	20L	3	Pre	Contact	2.3-3.4L/ha
ProForce Checkpoint 500 SC Herbicide	500g/L Propyzamide	Suspension Concentrate	5L	3	Pre / Post	Systemic	1.2L/ha
ProForce Contra M Duo Herbicide	340g/L MCPA, 80g/L Dicamba	Soluble Liquid	1L, 5L, 20L	4	Post	Systemic	Turf: 6.5L/ha Non-Crop: 5.2L/ha
ProForce Destro 375 Herbicide	375g/L Diclofop-methyl	Emulsifiable Concentrate	20L	1	Post	Systemic	1-2.5L/ha
ProForce Duke 100 WG Herbicide	100g/kg Iodosulfuron-methyl sodium	Wettable Granule	100g, 500g	2	Post	Systemic	25-150g/ha
ProForce Echelon Herbicide & Fertiliser 15:1:17	10g/kg Oxadiazon	Granular	20kg	14	Pre	Contact	3-4kg/100m <sup>2</sup> or 300-400kg/ha
ProForce Echelon Duo Advanced Herbicide + Insecticide & Fertiliser 15:1:17	10g/kg Oxadiazon, 1g/kg Thiamethoxam	Granular	5kg, 20kg	14	Pre	Contact	3-4kg/100m <sup>2</sup> or 300-400kg/ha
ProForce Geronimo 800 SL Herbicide	800g/L MSMA	Soluble Concentrate	10L	0	Post	Systemic	Turf: 3-6L/ha Non-Crop: 10-12L/ha
ProForce Onset 10 GR Herbicide	10g/kg Prodiamine	Granular	5kg, 20kg	3	Pre	Contact	0.5-2kg/100m <sup>2</sup> or 50-200kg/ha
ProForce Recondo 100 WG Herbicide	100g/kg Trifloxysulfuron Sodium	Water Dispersible Granule	100g, 500g	2	Post	Systemic	115-300g/ha
ProForce ProSedge 750 DF Herbicide	750g/kg Halosulfuron-methyl	Dry Flowable	500g	2	Post	Systemic	65-130g/ha
ProForce Warhead Trio Herbicide	300g/L MCPA (Potassium Salt), 15g/L Diflufenican, 20g/L Clopyralid	Suspension Concentrate	10L	12, 4	Post	Contact / Systemic	5L/ha
ProForce Weedblast MA Selective Herbicide	200g/L Bromoxynil, 200g/L MCPA	Emulsifiable Concentrate	20L	6, 4	Post	Contact / Systemic	300mL/100L water or 60mL/100m <sup>2</sup>
BroadForce MA Selective Herbicide	200g/L MCPA, 200g/L Bromoxynil	Emulsifiable Concentrate	500mL, 1L	6, 4	Post	Contact / Systemic	30mL/50m <sup>2</sup>
HaloForce 750 WG	750g/kg Halosulfuron-methyl	Wettable Granule	25g	2	Post	Systemic	1.3g/100m <sup>2</sup>





**SCAN THE QR CODE FOR  
PRODUCT BROCHURE,  
LABEL & SDS**

## NON-SELECTIVE INDUSTRIAL HERBICIDES

Product	Active Ingredients	Formulation	Pack Size	Mode of Action	Knockdown or Residual Activity	Rate
ProForce Cortex Duo Industrial Herbicide	525g/L Nonanoic Acid, 15g/L Oxyfluorfen	Liquid	10L	14	Knockdown & Residual	70mL per litre of water
ProForce Fast Draw 100 EC Herbicide	100g/L Butafenacil	Emulsifiable Concentrate	1L, 10L	14	Knockdown	100mL plus a registered rate of glyphosate
ProForce Numchuk Quad Herbicide	15g/L Oxyfluorfen, 350g/L Terbutylazine, 100g/L Glyphosate, 60g/L Amitrole	Suspension Concentrate	1L, 20L	5, 9, 13, 14	Knockdown & Residual	Boom: 20L/ha Handgun: 1.8L per 100L of water
ProForce Rapid Fire 800 SG Herbicide	800g/kg Glyphosate (Aquatically approved)	Soluble Granule	10kg	9	Knockdown	Boom: 0.7g-4kg Handgun: 250-700g/100L
ProForce Rapid Fire 510 SL Herbicide	510g/L Glyphosate (Aquatically approved)	Aqueous Concentrate	20L, 1000L	9	Knockdown	Boom: 1.3-6.3L/ha Handgun: 350mL-1.3L/100L
ProForce Renegade 800 WG Herbicide	800g/kg Bromacil	Water Dispersible Granule	1kg, 5kg	5	Knockdown & Residual	3.5-6.5kg/ha
ProForce Slinger 240 Industrial Herbicide	240g/L Picloram	Soluble Concentrate	10L	4	Knockdown	Boom: 95mL-9.38L/ha Handgun: 25-625mL/100L
ProForce Wallop 600 Industrial Herbicide	600g/L Clopyralid	Soluble Concentrate	10L	4	Knockdown & Residual	Handgun: 165-250mL/100L
MetForce 600 WG Industrial Herbicide	600g/kg Metsulfuron-methyl	Water Dispersible Granule	500g	2	Knockdown	Boom: 15-160g/ha Handgun: 5-15g/100L
SimForce 500 SC Industrial Herbicide	500g/L Simazine	Suspension Concentrate	20L	5	Knockdown & Residual	1.2-88L/ha or 800mL-8.8L/100L or 140mL-1.2L/15L

## INDUSTRIAL WEED IDENTIFICATION GUIDE

Blackberry



Cobbler's Peg



Creeping Cinderella Weed



Fleabane



Fireweed



Gorse



Lantana



Verbena



## INSECTICIDE CONTROL TABLE

Product	Turf												Other												
	Ants (Various nuisance ants & Funnel Ant)	African Black Beetle (Adult)	African Black Beetle (Larvae)	Argentine Stem Weevil	Argentine Scarab	Billbug Adults	Billbug Larvae	Couch Fly	Couch Mite	Ground Pearl	Lawn Armyworm	Mole Cricket	Pruinose Scarab	Sod Webworm	Aphids	Caterpillars & Loopers	Cutworm	Mealy Bug	Plague Thrips	Spiders	Subterranean Termites	Two Spotted Mite	Wasps	Whitefly	
ProForce Echelon Duo Advanced Herbicide + Insecticide & Fertiliser 15:1:17			●		●		●																		
ProForce Malice 18								●														●			
ProForce Malice Duo								●																	
ProForce Recruit 200 SC			●		●		●					●													
ProForce Rumbler 100 SC	●	●		●		●				●			●	●	●	●	●	●	●	●	●	●	●	●	●
ProForce Scarlet Trio Advanced Insecticide			●	●	●		●	●	●	●		●													
TermiForce 100 SC	●			●								●									●				







SCAN THE QR CODE FOR  
PRODUCT BROCHURE,  
LABEL & SDS

## TURF & ORNAMENTAL INSECTICIDES / MITICIDES

Product	Active Ingredients	Formulation	Pack Size	Mode of Action	Contact or Systemic Activity	Rate
ProForce Echelon Duo Advanced Herbicide + Insecticide & Fertiliser 15:1:17	10g/kg Oxadiazon, 1g/kg Thiamethoxam	Granular	5kg, 20kg	4A	Systemic	3-4kg/100m <sup>2</sup> or 300-400kg/ha
ProForce Malice 18 Miticide	18g/L Abamectin	Emulsifiable Concentrate	5L	6	Translaminar	2L/ha
ProForce Malice Duo Advanced Miticide	187.5g/L Clofentezine, 18g/L Abamectin	Suspension Concentrate	1L, 5L	10A, 6	Contact Translaminar	1.35L/ha in 400-800L of water
ProForce Recruit 200 SC Insecticide	200g/L Imidacloprid	Suspension Concentrate	1L, 5L	4A	Systemic	2.5L/ha
ProForce Rumbler 100 SC Insecticide	100g/L Bifenthrin	Suspension Concentrate	1L, 5L	3A	Contact	Turf: 1.2-4.4L/ha Ornamentals: 20-80mL/100L
ProForce Scarlet Trio Advanced Insecticide	116g/L Clothianidin, 83g/L Clofentezine, 13g/L Abamectin	Emulsifiable Concentrate	1L, 5L	4A, 10A, 6	Systemic, Translaminar, Contact	3L/ha
TermiForce 100 SC Termiticide & Insecticide	100g/L Fipronil	Suspension Concentrate	1L	2B	Systemic	Turf: 300-750mL/ha Termites: 600mL in 100L of water Ants: 6mL in 1L of water

Billbug Adult



Cockchafer Larvae



Lawn Armyworm Larvae



Mole Cricket



## DISEASE IDENTIFICATION GUIDE

Anthracnose



Black Helminthosporium



Brown Patch



Curvularia



Dollar Spot



ERI



Fairy Ring



Fusarium



Grey Leaf Spot



Leptosphaerulina



Pythium



Red Thread



Rust



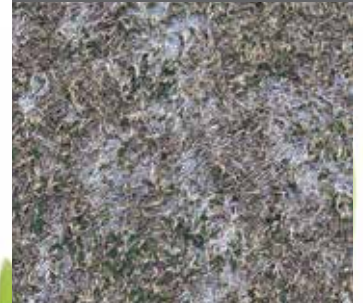
Spring Dead Spot



Take All Patch



White Helminthosporium





**SCAN THE QR CODE FOR  
PRODUCT BROCHURE,  
LABEL & SDS**

## DISEASE CONTROL TABLE

Product	Anthrachnose	Bipolaris	Brown Patch	Botrytis Blight / Grey Mould	Curvularia	Crown and Root Rot	Dollar Spot	Drechslera	ERI	Fairy Ring	Fusarium	Grey Leaf Spot	Leptosphaerulina	Pythium	Red Thread	Rust	Spring Dead Spot	Take All Patch	Ornamental Plant Diseases
ProForce Counterattack Duo Fungicide	●	●	●				●	●	●	●	●							●	
ProForce Clean Sweep Trio Fungicide	●	●	●				●	●	●	●									
ProForce Grenadier 800 WG Fungicide						●							●						●
ProForce Pistol 600 SC Fungicide		●	●					●			●		●						
ProForce Regiment 550 EC Fungicide							●									●	●		
ProForce Shrapnel 600 SL Fungicide													●						●
ProForce Solitaire 240 ME Fungicide													●						
ProForce Squadron Weatherace 720 SC Fungicide			●				●					●							●
ProForce Tombstone Duo Fungicide	●	●	●	●	●		●	●	●		●		●						●
ProForce Voltar 250 SC GT Fungicide		●	●	●			●	●			●							●	●
ProForce Voltar 500 SC Fungicide		●	●	●	●		●	●			●							●	●
Azo-Force 250 SC Fungicide	●	●	●					●			●	●		●	●				
Segway 400 SC Fungicide													●						

Bipolaris and Drechslera are causal pathogens of Helminthosporium diseases.

ERI Pathogens are causal pathogens of Couch Decline, Couch Dieback, Spring Dead Spot and Take All Patch pathogens.



## TURF & ORNAMENTAL FUNGICIDES

Product	Active Ingredients	Formulation	Pack Size	Mode of Action	Contact or Systemic Activity	Rate
ProForce Clean Sweep Trio Fungicide	119g/L Thiophanate-methyl, 37.5g/L Fluazinam, 36g/L Tebuconazole	Suspension Concentrate	5L	1, 29, 3	Systemic, Translaminar & Contact	120-200mL per 100m <sup>2</sup> or 12-20L/ha
ProForce Counterattack Duo Fungicide	168g/kg Pyraclostrobin, 112g/kg Boscalid	Water Dispersible Granule	2.5kg	11, 7	Systemic (upwards) + Translaminar	17.5-35g in 4-10L of water per 100m <sup>2</sup> or (1.75-3.5kg/ha)
ProForce Grenadier 800 WG Fungicide	800g/kg Fosetyl-al	Wettable Granule	5kg	33	Systemic (both directions)	Turf: 125g/100m <sup>2</sup> or 12.5kg/ha Ornamentals: 90g per 100L of water
ProForce Pistol 600 SC Fungicide	600g/L Thiram	Suspension Concentrate	5L, 20L	M3	Contact	160-200mL per 100m <sup>2</sup> or 16-20L/ha
ProForce Regiment 550 EC Fungicide	550g/L Propiconazole	Emulsifiable Concentrate	10L	3	Systemic (upwards)	Turf: 14-28mL/100m <sup>2</sup> Boronia: 230-460mL/ha Perennial Ryegrass: 230mL/ha
ProForce Shrapnel 600 SL Fungicide	600g/L Propamocarb	Soluble Liquid	5L	28	Systemic (upwards)	Turf: 45-65mL per 100m <sup>2</sup> (4.5-6.5L/ha) Ornamentals: 15mL/10L of water
ProForce Solitaire 240 ME Fungicide	240g/L Metalaxyl-M	Micro-emulsion Concentrate	1L, 5L	4	Systemic (upwards)	17-35mL/100m <sup>2</sup> or 1.75-3.5L/ha
ProForce Squadron Weatherace 720 SC Fungicide	720g/L Chlorothalonil	Suspension Concentrate	10L	M5	Contact / Protectant	Turf: 130-200mL per 100m <sup>2</sup> (13-24L/ha) Ornamentals: 100mL/100L of water
ProForce Tombstone Duo Fungicide	200g/L Tebuconazole, 100g/L Trifloxystrobin	Suspension Concentrate	100mL, 500mL, 1L	11, 3	Systemic (upwards) + Translaminar	20-30mL in 8-16L of water per 100m <sup>2</sup> or 2-3L/ha
ProForce Voltar GT 250 SC Fungicide	250g/L Iprodione (oil based)	Suspension Concentrate	5L	2	Locally Systemic (translaminar)	Turf: 90-180mL/4-150L of water per 100m <sup>2</sup> or 9-18L/ha Ornamentals: 200mL/100L of water
ProForce Voltar 500 SC Fungicide	500g/L Iprodione (water based)	Suspension Concentrate	1L, 5L	2	Locally Systemic (translaminar)	Turf: 45-90mL/5-150L of water per 100m <sup>2</sup> or 4.5-9L/ha Ornamentals: 100mL/100L of water
Azo-Force 250 SC Fungicide	250g/L Azoxystrobin	Suspension Concentrate	2.5L	11	Systemic (upwards) + Translaminar	12-23mL per 100m <sup>2</sup> in 4-8L of water or 1.2-2.3L/ha
Segway 400 SC Fungicide	400g/L Cyazofamid	Suspension Concentrate	500mL, 1L	21	Translaminar	10mL per 100m <sup>2</sup> (1L/ha)





**SCAN THE QR CODE FOR  
PRODUCT BROCHURE,  
LABEL & SDS**

## PLANT GROWTH REGULATORS

Product	Active Ingredients	Formulation	Pack Size	Purpose	Rate
ProForce Amigo 120 ME Plant Growth Regulator	120g/L Trinexapac-ethyl	Micro-emulsion Concentrate	1L, 5L	Growth Regulator Turf Quality Improvement	Greens: 150mL-2L/ha Fairways: 600mL-4L/ha Parks, Ovals, Roughs: 1-6L/ha Bunker Facing, Edging: 4-8L/ha
ProForce Incognito 480 SL Turf Growth Regulator	480g/L Ethephon	Soluble Liquid	10L	Growth Regulator Poa seedhead suppression	7-10L/ha
ProForce Regulate Plant Growth Regulator	200g/L Paclobutrazol	Suspension Concentrate	2.5L	Growth Regulator Poa suppression	500mL-2.8L/ha
ProForce Siesta Plant Growth Regulator	270g/L Maleic Hydrazide	Liquid Concentrate	10L	Regulate grass growth for up to 16 weeks	Handgun: 600mL-1.25L Boom: 6-12.5L/ha Knapsack: 60-125mL

## MISCELLANEOUS PRODUCTS

Product	Active Ingredients	Formulation	Pack Size	Purpose	Rate
AgriTec Aquatic Algaecide	226g/L Copper Sulphate Pentahydrate	Soluble Concentrate	5L, 15L, 200L	Self Dispersing Aquatic Algaecide	0.2-1.0mg/L
Algae Aid Algaecide	142.5g/L Quaternary Ammonium Compound	Soluble Concentrate	5L	Algae control in turf and non-crop situations	Turf: 5L/ha (1L in 100L of water) General Use: 30mL/5L
VapourShield	904g/L Natural Cyclohexane Polymer	Emulsifiable Concentrate	5L	Anti-Transpirant & turf conditioner	Turf Production: 5-10L/ha Turf Maintenance: 10-20L/ha Ornamentals: 100mL in 4-5L of water



Planktonic (Free Floating) Algae



Filamentous Algae

## SPRAY SURFACTANTS, ADJUVANTS & ADDITIVES

Product	Active Ingredients	Formulation	Pack Size	Purpose	Rate
ProForce Monterey Surfactant	350g/L Soyol Phospholipids, 350g/L Propionic Acid	Soluble Concentrate	1L, 5L, 20L	Aquatically approved Surfactant & Acidifier	100-500mL/100L of water
ProForce Scrubwet Penetrant Surfactant	1020g/L Polyether Modified Polysiloxane	Suspension Concentrate	5L, 20L	Surfactant	30-200mL/100L of water
Cambium Biodegradable Carrier for Woody Weed Herbicides	Methyl Oleate (Canola Oil Methyl Ester)	Liquid	20L	Biodegradable diesel replacement for use in combination with woody weed herbicide technology when conducting Basal Bark and Cut Stump operations.	Please refer to product label
Foam Aid Foam Suppressant	Dimethylpolysiloxane	Liquid	1L	Foam Suppressant	20-60mL/100L of water
Indigo Blue Spray Marking Dye	90g/L Sulphonated Aromatic Dye	Liquid	5L, 20L	Blue spray indicator	100mL/100L of water
Indigo Red Spray Marking Dye	150g/L Rhodamine B, 675g/L Diethylene Glycol	Soluble Concentrate	5L, 20L	Red spray marking dye	5-10mL per 10L of spray solution
Octane Non-ionic Extender, Sticker, Spreader	859g/L Di-1-p-menthene	Emulsifiable Concentrate	5L	Adjuvant	300mL-1.2L/ha
Odour Aid	Methyl Salicylate	Liquid	1L	Odour reduction whilst applying agchem products	130mL/100L of spray solution
OptiSpread 1000 Non-ionic Surfactant	1000g/L Nonyl Phenol and Alcohol Ethoxylate	Soluble Concentrate	20L	A non-ionic wetting and spreading agent formulated to increase spray contact, coverage and penetration of herbicides, fungicides and insecticides	Please refer to product label
Overtake Oil	120g/L Nonyl Phenol Ethoxylate, 120g/L Alcohol Ethoxylate, 582g/L Paraffinic Oil	Oil Miscible Liquid	20L	Improve wetting and spreading of Herbicides	500mL per 100L of water, applying to point of run-off
Silixol T&O	2.7% Ortho Silicic Acid (OSA)	Liquid	1L	Stress Management	250mL-1L/ha
Turf Aid	Pigment, Elicitor of Plant Response	Liquid	1L	Stress Management	0.3-1.2L/ha
Voltage MSO Spray Adjuvant	700g/L Ethyl and Methyl Esters of vegetable oils with 116g/L Non-ionic Surfactants	Emulsifiable Concentrate	20L	Increase penetration, wetting and spreading, spray droplet evaporation	0.5-1L per 100L of water





SCAN THE QR CODE FOR  
PRODUCT BROCHURE,  
LABEL & SDS

## ADJUVANT ACTIVITY GUIDE

Product	Acidifier (Alkaline Hydrolysis)	Antifoam	Deposition (Stick)	Drift	Droplet Lifetime Management	Penetrant	Spreader	Protection from UV & Wind	Water Conditioner	Aquatically Approved	Comments
Polymer Forming Compounds (OCTANE <sup>^</sup> )			●	●	●	●*	●	●			Excellent turf safety. Extends contact insecticide & fungicide performance.
Non-ionic Surfactants (OPTI-SPREAD 1000 <sup>^</sup> )			●				●				
Organosilicones (SCRUBWET <sup>^</sup> )			●			●#	●				Super spreaders. Best for woody weed control.
Crop Oil Concentrates (OVERTAKE OIL <sup>^</sup> )			●	●	●	●	●				Useful addition for non-selective herbicides.
Vegetable Oil Concentrates (VOLTAGE MSO <sup>^</sup> )			●		●	●	●				Use lower rate in high temperatures.
Soyal Phospholipids, Propionic Acid (MONTEREY <sup>^</sup> )	●		●	●		●*	●			●	Not all product needs acidification. Check Monterey product guide.
Ammonium Sulphate									●		Overcomes water hardness and may assist in uptake.
Defoamers (FOAM AID <sup>^</sup> )		●									Reduces foaming in spray tank. Low rates of application required.

<sup>^</sup> Octane Sticker, Extender, Spreader. ProForce Scrubwet Penetrant Surfactant. ProForce Monterey Surfactant. Voltage MSO Spray Adjuvant. Overtake Oil. Foam Aid Foam Suppressant. Opti-Spread 1000 Non-ionic Surfactant.

\* Passive movement into the plant. Soft on plant's cuticle, as a result of organic foundations.

# Forced movement into plant. Best for use in total weed control.

ProForce is a registered trademark of Indigo Specialty Products Pty Ltd.

## MIXING PROCEDURE FOR PROFORCE PRODUCTS

Step 1	Water goes into the tank first. Fill the tank at least ½ full and start agitation.
Step 2	Add TURF AID (allow to fully disperse into the water solution).
Step 3	Add water conditioners (eg. Ammonium sulphate, acidifiers – eg. Monterey).
Step 4	Water Soluble Packages (WSPs)
Step 5	Water Dispersible Granules (WG / WDGs)
Step 6	Wettable Powders (WPs)
Step 7	Suspension Concentrates (SCs)
Step 8	Oil in Water Emulsions (EWs)
Step 9	Oil Dispersions (ODs)
Step 10	Emulsifiable Concentrates (ECs)
Step 11	Soluble Concentrates
Step 12	Grenadier 800 WG Fungicide
Step 13	Liquid Fertilisers
Step 14	Spray adjuvants (including Octane, Overtake Oil, Scrubwet or Voltage MSO).
Step 15	Fill remainder of the spray tank with water to the desired volume.



© ProForce® is a registered trademark of Indigo Specialty Products Pty Ltd, 2024