



SPECIALTY PRODUCTS

Bowling Greens Product Portfolio



Plant protection solutions for Bowling Greens



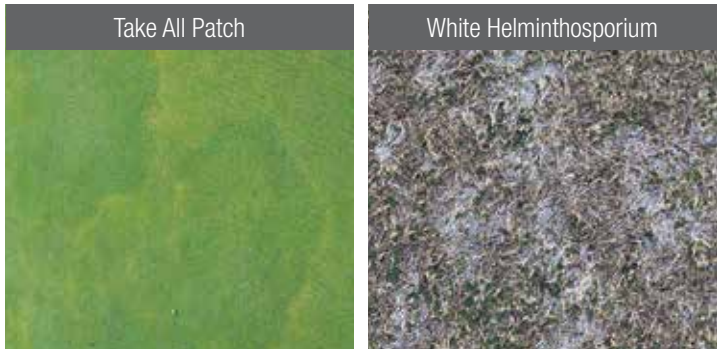
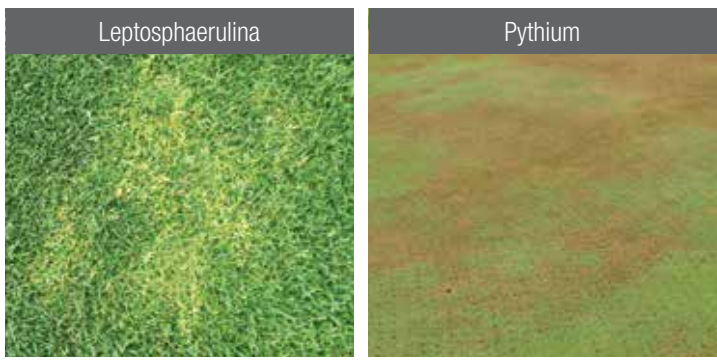
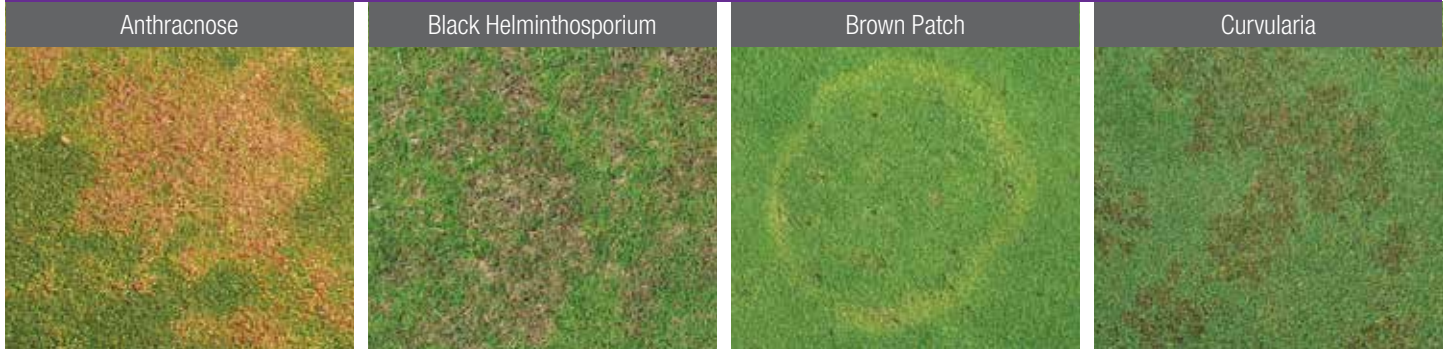
FUNGICIDES

Product	Active Ingredient	Pack Size	Rate		Systemic	Contact	Anthracnose*	Black Helmo	Brown Patch	Curvularia	Dollar Spot	ERI	Fairy Ring	Fusarium	Leptosphaerulina	Pythium	Red Thread	Spring Dead Spot	Take All Patch	White Helmo
			Per 100m ²	Per Bowling Green																
Azo-Force 250 SC Fungicide	Azoxystrobin	2.5L	12-23mL	168-322mL	●		●	●	●					●		●	●			
Clean Sweep Trio Fungicide	Thiophanate Methyl, Fluazinam, Tebuconazole	5L	120-200mL	1.68-2.8L	●	●	●	●	●		●	●	●						●	●
Grenadier 800 WG Fungicide	Fosetyl -Aluminium	2.5kg	125g	1.875kg	●											●				
Regiment 550 Fungicide	Propiconazole	10L	14-28mL	196-392mL	●					●								●		
Segway 400 SC Fungicide	Cyazofamid	500mL, 1L	10mL	140mL		●										●				
Solitaire 240 ME Fungicide	Metalaxyl-M	1L	17-35mL	245-490mL	●											●				
Squadron Weatherace 720 SC Fungicide	Chlorothalonil	10L	130-240mL	1.82-3.36L		●			●					●						
Shrapnel 600 SC Fungicide	Propamocarb	1L	65mL	910mL	●											●				
Tombstone Duo Fungicide	Tebuconazole, Trifloxystrobin	500mL, 1L	20-30mL	280-450mL	●	●	●	●	●	●	●	●		●	●			●		●
Voltar 250 GT Fungicide	Iprodione (Oil based)	5L	100-200mL	1.5-3.0L		●		●	●		●			●				●		●
Voltar 500 SC Fungicide	Iprodione (Water based)	1L, 5L	45-90mL	630mL-1.26L		●		●	●	●				●				●		●


* For use on cool season bowling greens only.



DISEASE IDENTIFICATION GUIDE



Field Performance with ProForce Clean Sweep Trio Fungicide – excellent control of Couch Decline disease



Clean Sweep Trio Treated Plot 20L/ha

Untreated Control Treatment

Field Trial conducted by Independent Field Trial Contractor – Gcenseo. Trial was applied as Curative applications on the 6th December, 2019. 3 applications of ProForce Clean Sweep Trio were applied monthly at the rate of 20L/ha. Trial Location: Norman Park Bowls Club.

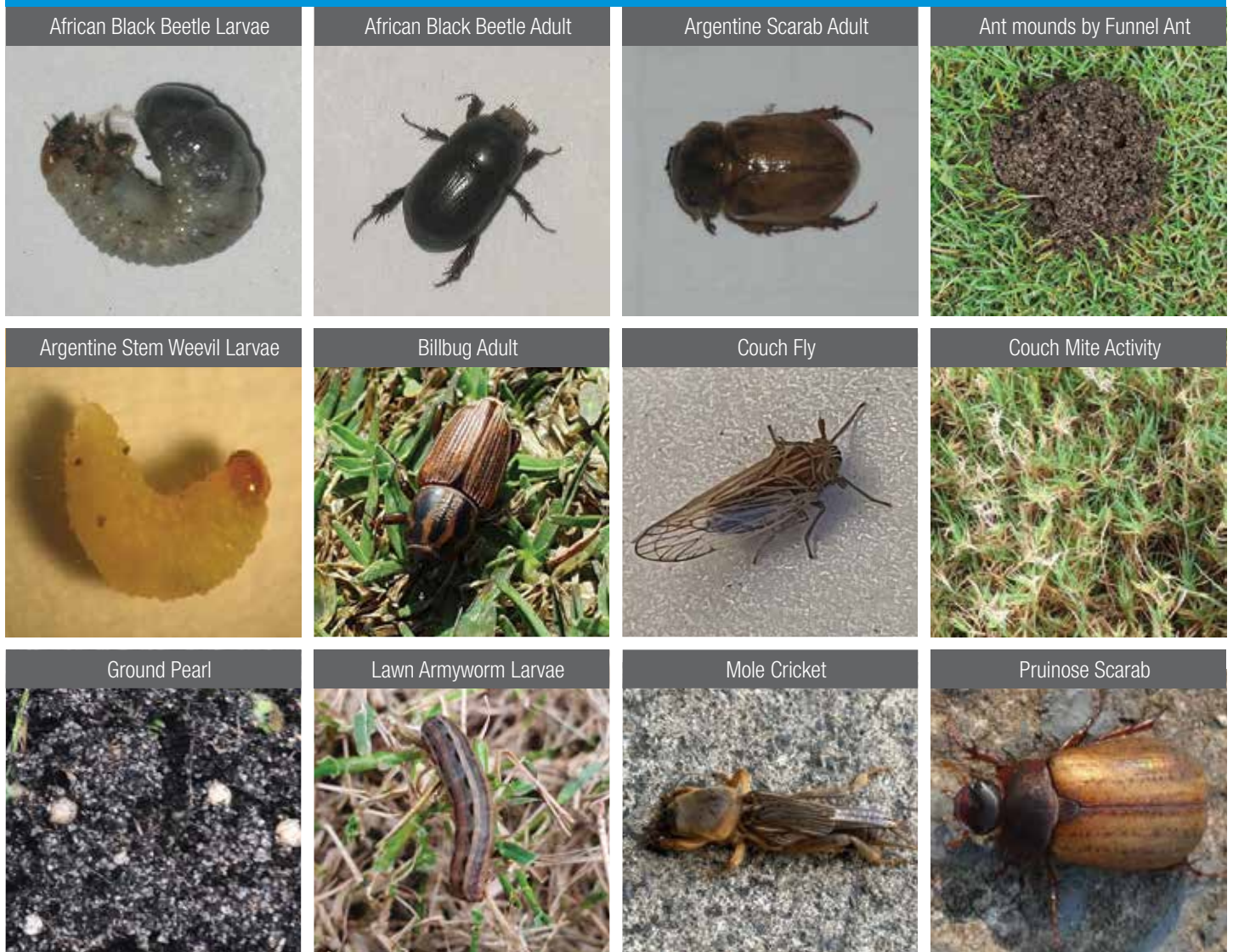
ERI Disease Management Considerations: Timely preventative applications are more effective than curative treatments. Initiate applications in spring before temperatures reach 18°C (Magnaporthe). Make 3 applications at monthly intervals before key disease symptoms occur. Initiate applications in autumn when air temps reach 26°C and RH 75% or higher. Position the product into the rootzone for most effective performance.

INSECTICIDES

Product	Active Ingredient	Pack Size	Rate		Systemic	Contact	African Black Beetle	Argentinian Scarab	Ants	Argentine Stem Weevil*	Billbug (La Plata Weevil)	Couch Fly	Couch Mite	Ground Pearl	Lawn Armyworm	Mole Crickets	Pruinose Scarab	Sod Webworm
			Per 100m ²	Per Bowling Green														
Malice 18 Miticide	Abamectin	5L	20mL	280mL		●							●					
Malice Duo Advanced Miticide	Abamectin, Clofentezine	1L, 5L	13.5mL	189mL		●							●					
Recruit 200 SC Insecticide	Imidacloprid	1L, 5L	25mL	375mL	●		●	●			●						●	
Rumbler 100SC Insecticide	Bifenthrin	1L, 5L	12-44mL	168-616mL		●	●		●	●	●				●			●
Scarlet Trio Advanced Insecticide	Clothianidin, Clofentezine, Abamectin	1L, 5L	30mL	420mL	●	●	●	●		●	●	●	●	●		●		
TermiForce 100 SC Insecticide	Fipronil	1L	3-7.5mL	42-105mL	●				●	●						●		

* For use on cool season bowling greens only.

INSECT IDENTIFICATION GUIDE



HERBICIDES

Product	Active Ingredient	Pack Size	Rate		Post-emergent	Pre-emergent	Broadleaf Weeds	Bahagrass	Crowsfoot Grass	Kikuyu	Paspalum	Ryegrass	Sedges (Nutgrass, Mullumbimby Couch)	Summergrass / Crabgrass	Wintergrass	Key Broadleaf Weeds					
			Per 100m ²	Per Bowling Green												Bindii	Cotula	Cudweed	Clover & Medics	Onion Weed	Creeping Oxalis
Contra M Duo Herbicide	MCPA, Dicamba	1L, 5L, 20L	65mL	900mL	●		●									●	●	●	●	●	
Checkpoint 500 SC Herbicide	Propyzamide	5L	6-12mL	85-170mL	●	●									●						
Destro 375 Herbicide	Diclofop-Methyl	20L	10-35mL	140-490mL	●				●												
Duke 100 WG Herbicide	Iodosulfuron-Methyl Sodium	100g	0.25-1g	3.75-15g	●		●	●			●				●	●	●		●	●	
Geronimo 800 SL Herbicide	MSMA	10L	30-60mL	420-840mL	●				●		●			●							
ProSedge 750DF Herbicide	Halosulfuron methyl	25g, 500g	1.3g	18.2g	●								●								
Recondo 100 WG Herbicide	Trifloxysulfuron Sodium	100g, 500g	1.15-3g	16.1-42g	●		●	●		●		●	●	●	●	●	●	●	●	●	
Warhead Trio Herbicide	Clopyralid, Diflufenican, MCPA	10L	50mL	750mL	●		●									●		●	●	●	
Weed Blast MA Herbicide	MCPA, Bromoxynil	20L	60mL	840mL	●		●									●		●	●	●	

WEED IDENTIFICATION GUIDE

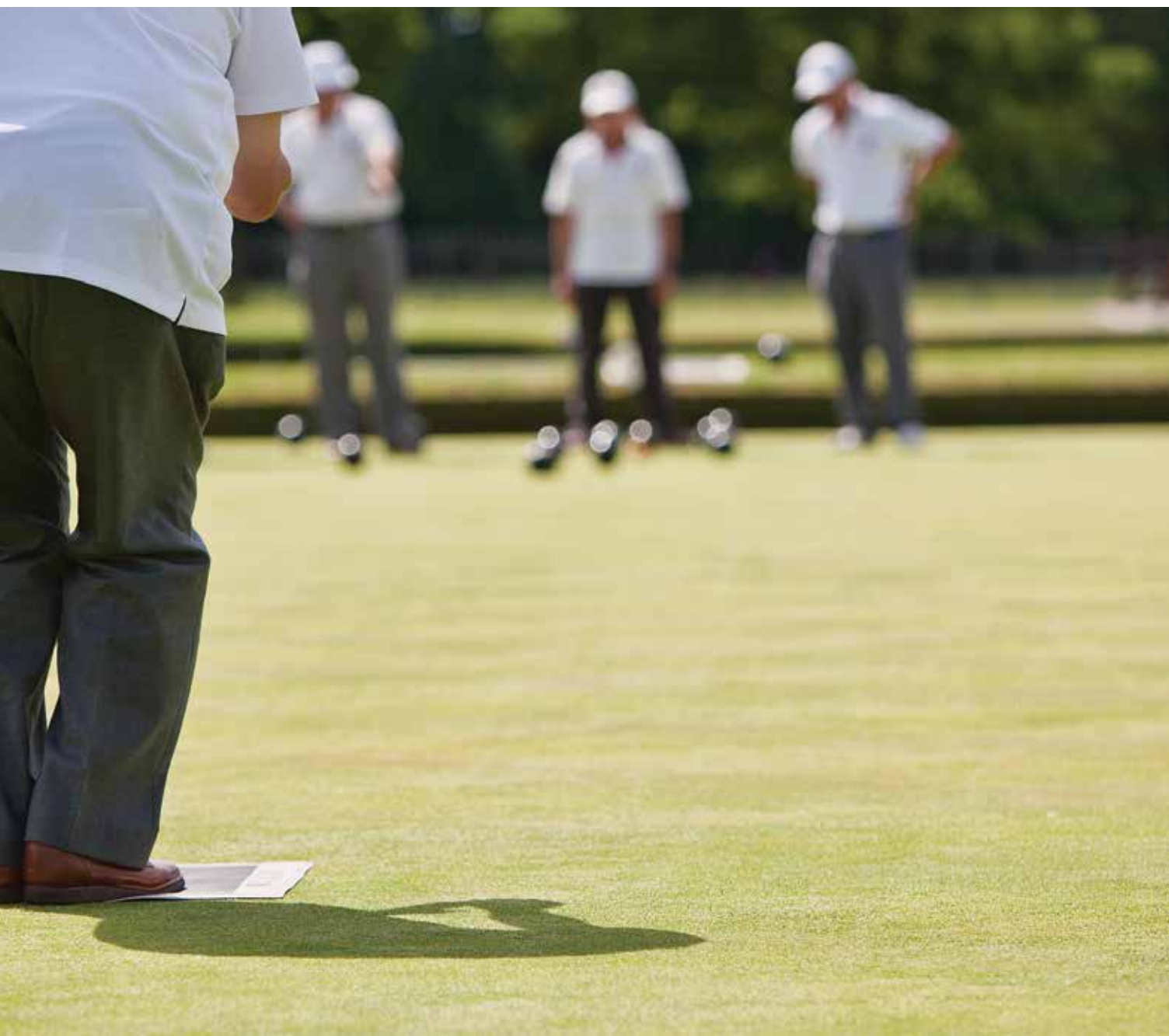


PLANT GROWTH REGULATORS

Product	Active Ingredient	Pack Size	Formulation	Product Type	Application Rate (see label for more detail)
Amigo 120 ME Plant Growth Regulator	120g/L Trinexapac-Ethyl	1L, 5L	Micro-Emulsion	Regulation of leaf and stem growth, as well as a turf management aid across a range of turfgrass species.	1.5-20mL/100m ² (21-28mL per bowling green)

PLANT HEALTH SOLUTIONS

Product	Active Ingredient	Pack Size	Formulation	Product Type	Application Rate (see label for more detail)
Silixol T&O	27g/L Ortho Silicic Acid	1L	Aqueous Concentrate	Plant available Silicon which strengthens cell walls, improves nutrient uptake and assists in protecting the plant.	10mL/100m ² (140mL per bowling green)
Turf Aid	Pigments, Salicylic Acid, Inbuilt Adjuvant	1L	Suspension Concentrate	Green pigment with Salicylic Acid included for improved resistance to plant diseases.	10mL/100m ² (140mL per bowling green)
BioForce Microlife	Trichoderma, Beneficial Bacteria, Humic Acid, South African Kelp	6L	Liquid	Will establish a strong beneficial microbial population that will colonise at the root zone to provide an improvement in the growing environment for plant roots.	10mL/100m ² (140mL per bowling green)



SOIL SURFACTANT SOLUTIONS

Product	Active Ingredient	Pack Size	Purpose	Rate per Bowling Green
HydroForce CalWet Granular Surfactant	30g/kg Block Co-Polymer technology	25kg	HydroForce CalWet is a granular residual surfactant formulation specifically developed for use in fine turf situations. HydroForce CalWet is a dual-purpose product and unique in that the granular carrier itself is Gypsum, which is ideal for reducing sodium accumulation in turf soils. The surfactant is a block co-polymer designed to provide preventative and curative control of localised dry spot.	70kg
HydroForce DewPRO Dew Control	1020g/L Polyether Modified Polysiloxane	5L	HydroForce DewPro is a concentrated, non-ionic organommodified siloxane based surfactant that works via significantly reducing leaf blade-level surface tension, thereby inhibiting excess moisture build-up and the formation of dew and frost.	280mL
HydroForce Evolve Penetrant Surfactant	480g/L Alkyl Sulphate and Dimethylsiloxane	1L	HydroForce Evolve is a true soil penetrant, consisting of an anionic soil-amending additive, which modifies surface tension of the hygroscopic (bound) water in the soil profile. The product improves water infiltration and penetration in all soil types, but particularly effective on loams and clays	140mL
HydroForce Extend Soil Surfactant	1000g/L Block Co-Polymer technology	20L	HydroForce Extend is a long-term surfactant that gives you guaranteed safe protection against water repellency problems and promotes turf uniformity for up to 90 days. It maximises surfactant molecule output, providing consistent management of water repellency.	2.8L
HydroForce Rapid Surfactant	400g/L Non-ionic Surfactant Blend	20L	HydroForce Rapid is a versatile surfactant formulation which can offer multiple functions in improving water availability in turf management. At lower rates of application, HydroForce Rapid can act as concentrated, high quality thatch and soil penetrant, designed to quickly and efficiently move water away from the foliage and thatch and into the growing medium. When used at higher rates of application, HydroForce Rapid offers a medium term residual soil surfactant option, providing up to 6-8 weeks performance,	280mL-2.8L
HydroForce Recharge Surfactant	800g/L Non-ionic Surfactant Blend	20L	HydroForce Recharge is a premium soil surfactant blend, specifically designed to prevent and overcome hydrophobic soil situations and improve water management processes within the turf and plant growing environment. HydroForce Recharge's key performance characteristics are due to its unique combination of powerful, highest quality surfactant technologies fulfilling rapid soil wetting, extended residual and reliable re-wetting and moisture retention performance.	2.8L
HydroForce Ultra Premium Surfactant	900g/L Modified Block Co-polymer technology	10L	HydroForce Ultra is a newly discovered, innovative modified block co-polymer surfactant technology, altered to enhance adsorption to hydrophobic materials and to radically increase the wettability and responsiveness. The product has been extensively trialled by the US University system (Purdue & Penn State) showing significant benefits. By managing soil water more efficiently, HydroForce Ultra maximises turfgrass quality, health and plant performance. This unique formulation will provide you with consistent control of soil moisture.	1.75L

SPRAY SURFACTANTS AND ADJUVANTS

Product	Active Ingredient	Pack Size	Formulation	Rate
Foam Aid Foam Suppressant	Dimethylpolysiloxane	1L	Suspension Concentrate	20-60mL per 100L of water
Indigo Blue Liquid Marking Dye	90g/L Sulphonated Aromatic Dye	5L, 20L, 200L	Liquid	100mL per 100L of water
Octane Non-ionic Extender, Sticker, Spreader	859g/L di-1-p-menthene	5L	Emlusifiable Concentrate	300mL-1.2L per hectare
Odour Aid	Methyl Salicylate	1L	Liquid	130mL per 100L of water
Optispread 1000	800g/L Nonyl Phenol Ethoxylates, 200g/L Diethylene Glycol Monobutyl Ether	20L	Liquid	50-300mL per 100L of water
Monteray Surfactant	350g/L Soyol Phospholipids, 350g/L Propionic Acid	1L, 5L, 10L	Emlusifiable Concentrate	100-500mL per 100L of water
ScrubWet Penetrant Surfactant	1020g/L Polyether Modified Polysiloxane	5L, 20L	Suspension Concentrate	30-200mL per 100L of water
Voltage MSO Spray Adjuvant	700g/L Ethyl and Methyl Esters of Vegetable Oil, 116g/L Non-ionic Surfactants	20L	Soluble Concentrate	500mL-1L per 100L of water

MIXING PROCEDURE FOR PROFORCE PRODUCTS

Step 1	Water goes into the tank first. Fill the tank at least ½ full and start agitation.
Step 2	Add TURF AID (allow to fully disperse into the water solution).
Step 3	Add water conditioners (eg. Ammonium sulphate, acidifiers – eg. Monterey).
Step 4	Water Soluble Packages (WSPs)
Step 5	Water Dispersible Granules (WG / WDGs)
Step 6	Wettable Powders (WPs)
Step 7	Suspension Concentrates (SCs)
Step 8	Oil in Water Emulsions (EWs)
Step 9	Oil Dispersions (ODs)
Step 10	Emulsifiable Concentrates (ECs)
Step 11	Soluble Concentrates
Step 12	Grenadier 800 WG Fungicide
Step 13	Liquid Fertilisers
Step 14	Spray adjuvants (including Octane, Overtake Oil, Scrubwet or Voltage MSO).
Step 15	Fill remainder of the spray tank with water to the desired volume.



About Us

Indigo Specialty Products is a privately-owned business, formed and operated by a small team of industry professionals with extensive experience in manufacture, distribution, development and product registration. We are a business focused on production & supply of plant protection, pest control, plant nutrition, soil, water management & biological products. Specialising in Australasian non-crop and niche horticultural markets, including Turf & Amenity, Nursery Production, Industrial Vegetation Management, Forestry, Pest Control and Consumer Home Garden & Pest Management.



Formulated in Australia

Our goal is to manufacture the Indigo product ranges in Australia as much as possible, where we can oversee product quality processes, whilst allowing us the flexibility to modify products to overcome ever changing challenges. Our ProForce and HydroForce range of products are formulated in Australia using imported materials. Our Xcel Fertiliser and BioForce Biological range are manufactured in Australia to the highest possible standards.



Developed & Researched for local conditions

We are heavily focused on local research and development to ensure our products perform at their peak in the Australian markets. We actively invest in field trial research programs and modify our formulations to match the local conditions of the key markets in which we operate to maximise performance.



Focused on Specialty markets

We strive to be relevant in our core markets, by adding value via overcoming issues and obstacles that are present in the markets we operate within. We do this by focusing on control of key pests or diseases or by solving key management issues that our valued end user customers have. We also strive to be active in the core markets in which we operate by working closely with our allied distributor network, offering support, service and advice where required.



Diagnostic Services

We offer a complete diagnostic services package, known as TechForce, designed to evaluate and identify key agronomic problems, so we can be better informed in recommending products for the specific situation. We also believe that by offering these services, our customers and users of our products can evaluate performance of the portfolio in a quantifiable and scientific approach. We use some of Australia's leading laboratories in delivering results for our services including Westgate Laboratories, Ground Science and the Department of Primary Industries, Orange.