

TURF DISEASE IDENTIFICATION GUIDE



Anthracnose (*Colletotrichum* spp.)



Brown Patch (*Rhizoctonia solani*)



Curvularia (*Curvularia* spp.)



Dollar Spot (*Sclerotinia homoeocarpa*)



ERI (Ectotrophic Root Infecting Fungi)



Fairy Ring - Type 1 Basidiomycete Fungi



Fairy Ring - Type 2 Basidiomycete Fungi



Fairy Ring - Type 3 Basidiomycete Fungi



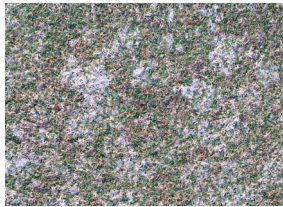
Fusarium (Winter) *Microdochium nivale*



Grey Leaf Spot (*Pyricularia grisea*)



Helminthosporium Complex (Black) *Bipolaris*, *Drechslera* & *Exserohilum* spp.



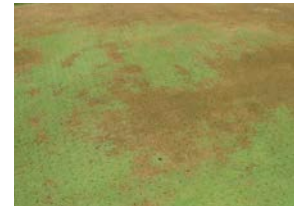
Helminthosporium Complex (White) *Drechslera* & *Exserohilum* spp.



Helminthosporium (Leaf Spot) *Bipolaris* spp.



Leptosphaerulina Leaf Blight (*Leptosphaerulina australis*)



Pythium (*Pythium* spp.)



Red Thread (*Laetisaria fuciformis*)



Rust (*Puccinia* spp.)



Slime Mould (*Mucilaga* or *Physarum* spp.)



Spring Dead Spot (*Leptosphaeria korrae*)



Take All Patch (*Gaeumannomyces graminis* var. *avenae*)

Product	Active Ingredient	Anthracnose	Black Helminthosporium	Brown Patch	Curvularia	Dollar Spot	Drechslera	ERI	Fairy Ring	Fusarium	Grey Leaf Spot	Leptosphaerulina	Pythium	Red Thread	Rust	Spring Dead Spot	White Helminthosporium	Take All Patch	Rate
ProForce Clean Sweep Trio Fungicide	119g/L Thiophanate-methyl, 37.5g/L Fluazinam, 36g/L Tebuconazole	●	●	●		●		●	●								●	●	120 - 200mL/100m ² (12 - 20L/ha)
ProForce Counterattack Duo Fungicide	168g/kg Pyraclostrobin, 112g/kg Boscalid	●	●	●		●	●	●	●	●								●	17.5-35g in 4-10L of water per 100m ² or (1.75-3.5kg/ha)
ProForce Grenadier 800WG Fungicide	800g/kg Fosetyl aluminium												●						125g/100m ² (12.5kg/ha)
ProForce Pistol 600SC Fungicide	600g/L Thiram		●	●						●			●						160-200mL/100m ² (16 - 20L/ha)
ProForce Regiment 550EC Fungicide	550g/L Propiconazole					●									●	●			14-28mL/100m ² (1.4 - 2.8L/ha)
ProForce Shrapnel 600SC Fungicide	600g/L Propamocarb												●						45- 65mL/100m ² (4.5 - 6.5L/ha)
ProForce Solitaire 240ME Fungicide	240g/L Metalaxyl-M												●						17- 35mL/100m ² (1.75 - 3.5L/ha)
ProForce Squadron Weatherace 720SC Fungicide	720g/L Chlorothalonil			●		●					●								130 - 240mL/100m ² (13 - 24L/ha)
ProForce Tombstone Duo Fungicide	200g/L Tebuconazole, 100g/L Trifloxystrobin	●	●	●	●	●		●		●		●						●	20 - 30mL in 8 - 16L of water per 100m ² (2-3L/ha)
ProForce Voltar GT 250SC Fungicide	250g/L Iprodione		●	●		●				●							●	●	90 - 180mL / 4-150L of water per 100m ² (9-18L/ha)
ProForce Voltar 500SC Fungicide	500g/L Iprodione		●	●	●	●				●							●	●	45 - 90mL / 4-150L of water per 100m ² (4.5 - 9L/ha)
Azo-Force 250SC Fungicide	250g/L Azoxystrobin	●	●	●						●	●	●	●					●	12 - 23 / 100m ² in 4 - 8L of water (1.2 - 2.3L/ha)
Segway 400SC Fungicide	400g/L Cyazofamid												●						10mL per 100m ² (1L/ha)